



SC Electronics Tech

SilvanChipElectronicsTech.Co.,Ltd.

Address: Fl.16 FuChang Building, Binhe Rd, Shenzhen, China

SC2262

SC2262 Description: (Compatible:PT2262)

SC2262 is a remote control encoder paired with either SC2272 utilizing CMOS Technology. It encodes data and address pins into a serial coded waveform suitable for RF modulation. SC2262 has a maximum of 10bits tri-state address pins providing up to 59049 address codes; thereby, drastically reducing any code collision and unauthorized code scanning possibilities. SC2262 is one of the first generation of Encoder/Decoder ICs that utilizes the unique PTC technology. When paired with SC2272, this encoder/decoder (SC2262/SC2272) pair can operate at very wide temperature range. Thus, this very important feature enables your encoder/decoder to operate under the worst environmental condition.

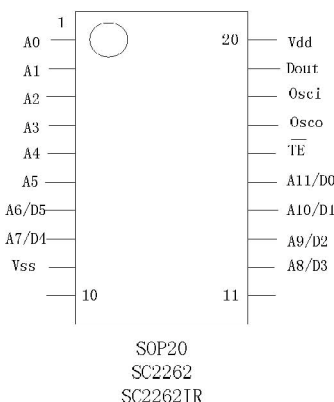
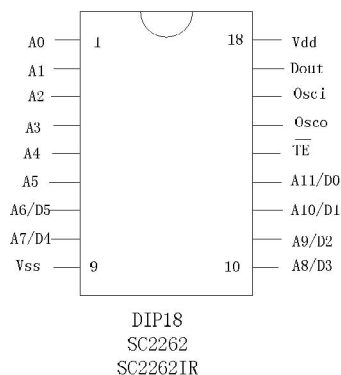
SC2262 Features: (Compatible:PT2262)

- Low power consumption
- Wide operating temperature range: -30 ~ 70 °C
- 8 or 10 tri-state code address pins
- 2 or 4 data pins
- Wide range of operating voltage :1.8- 12 voltes
- Single resistor oscillator
- Least external components

SC2262 Applications: (Compatible:PT2262)

- Home/motor car security system
- Garage door controller
- Remote fan controller
- Remote control toys

SC2262 Pin Configuration: (Compatible:PT2262)



Phone: 86-0755-88291843 88304213

Fax : 86-0755-88290509

E-mail: jj@sc-tech.cn

Http:// www.sc-tech.cn

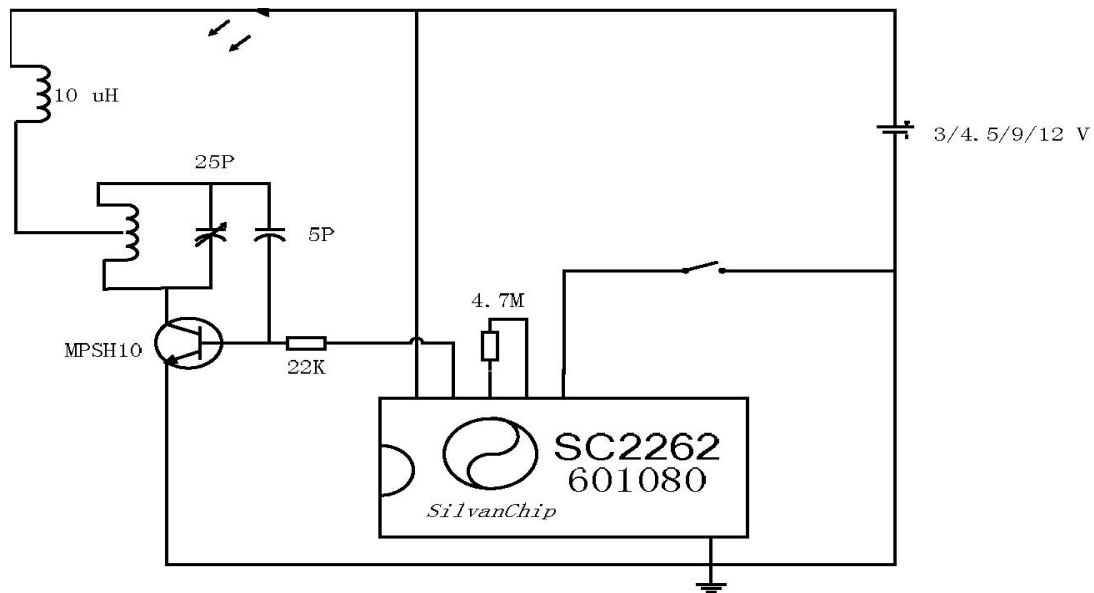
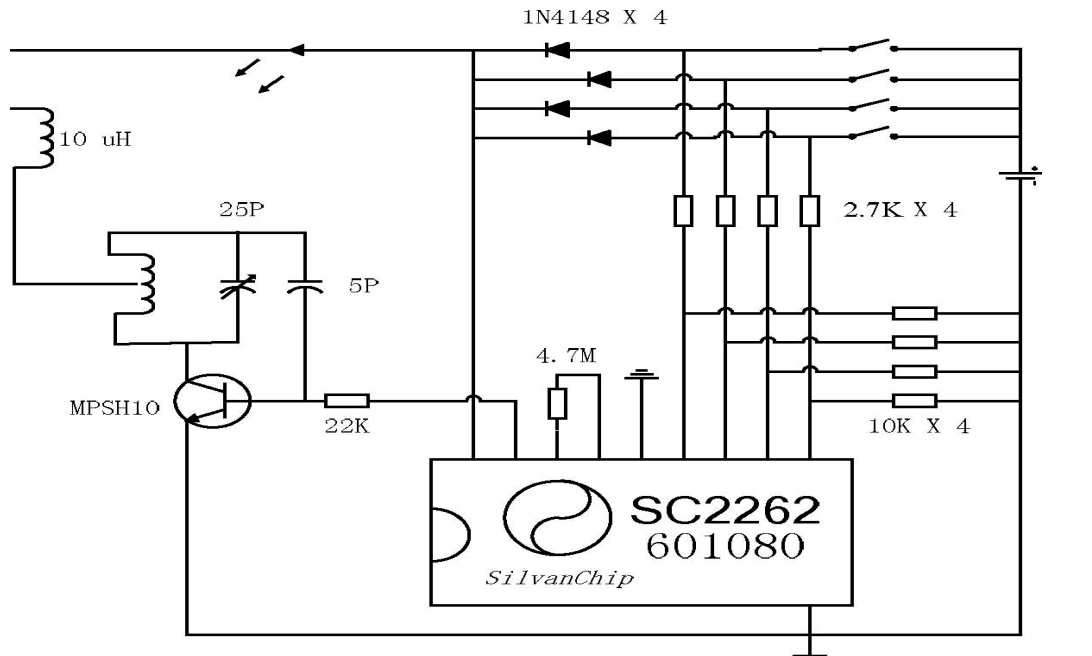


SC Electronics Tech

SilvanChip Electronics Tech. Co., Ltd.

Address: Fl.16 FuChang Building, Binhe Rd, Shenzhen, China

SC2262 Application circuits: (Compatible: PT2262)

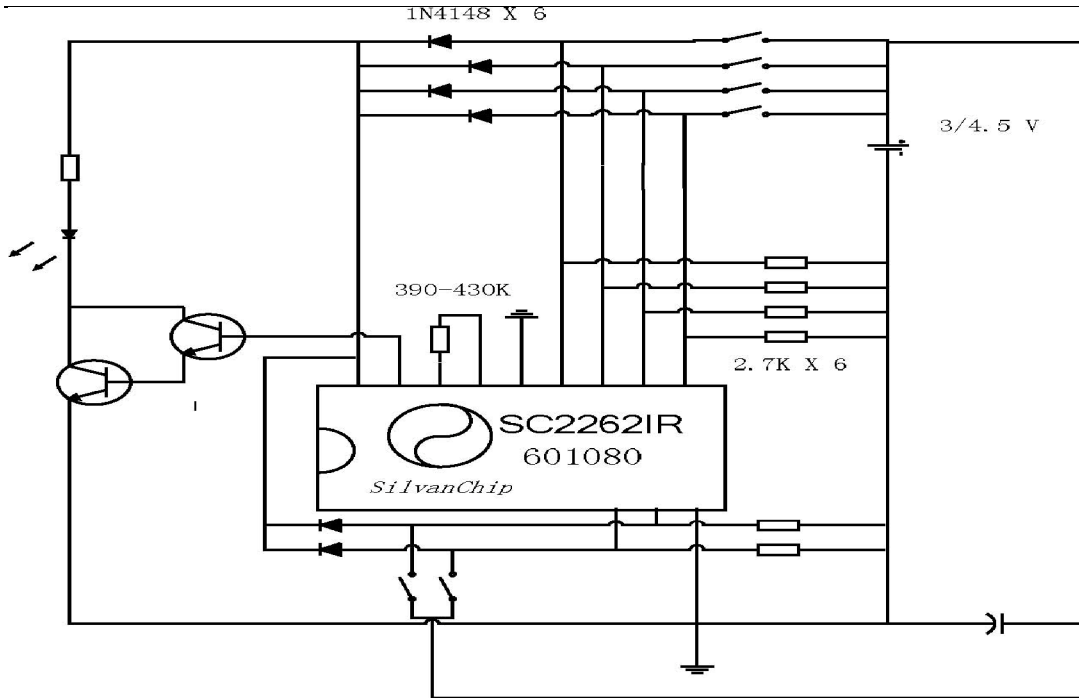




SC Electronics Tech

SilvanChip Electronics Tech. Co., Ltd.

Address: Fl.16 FuChang Building, Binhe Rd, Shenzhen, China



SC2262 Rosc pairing: (Compatible:PT2262)

SC2262	1.2M	SC2272(PT2272)	220K
	1.5 M		270K
	2.7 M		330K
	3.3M		680K
	4.7M		820k

Phone: 86-0755-88291843 88304213

Fax : 86-0755-88290509

E-mail: jja@sc-tech.cn

Http:// www.sc-tech.cn